



ANNUAL REPORT 2019



The Children's Cancer Foundation, Inc.



Darren Leonard (L) and Noah Kabia, two cancer warriors, are honored at the 2019 CCF Gala.

TABLE OF CONTENTS

welcome **1** / partners in the community **2** / finding inspiration **3** /
research and programmatic grants **4** / donors **6** / in-kind and volunteers **7** /
leadership **8** / financial snapshot **9**

MISSION

The Children's Cancer Foundation is committed to funding locally-based researchers, programs and facilities until every child is assured a healthy future.

FROM THE CHAIRMAN



2019 was an important year for The Children's Cancer Foundation, Inc. (CCF). Thanks to our supporters, researchers, survivors, families and volunteers, many of our young warriors are making great progress with treatment.

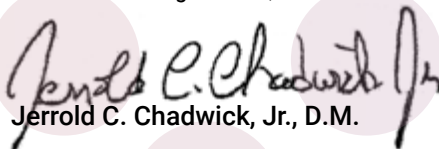
CCF's legacy, built upon the vision of our founder Shirley Howard, holds as true today as it did in 1983. As leader of our dedicated Board of Directors, I am proud of the work we do each year.

While more families learn that their child has cancer each day, there is progress to share. With the support of my dedicated colleagues, our Board of Directors guided CCF's investment (nearly \$1M) into facilities, research and programs in our community, which included:

- nine leading pediatric cancer researchers;
- the 4th Annual CCF Research Symposium, inviting leading researchers from our community to collaborate and to share outcomes of their research;
- a weekend offering hope, enjoyment and respite for Children's Inn families, in memory of our founder, Shirley Howard;
- funding five campers to attend Horizon Day Camp in summer of 2019;
- Magic Castle- providing 44 wishes at the Magic Castle for patients completing proton radiation treatment at the Maryland Proton Treatment Center;
- Fertility Preservation Program at Children's National, led by Jeffrey Dome, M.D.; and
- Hopecam, bringing technology to kids with cancer to enable them to remain in school.

Thank you for being a part of the CCF Family. Every donation, every volunteer, every event, contributes to making a difference in the life of a child facing a diagnosis of cancer.

With continued gratitude,


Jerrold C. Chadwick, Jr., D.M.

FROM THE PRESIDENT



Our journey to find cures for pediatric cancer continues. We find our strength from those we impact, specifically the kids in our community, and their families, fighting cancer with incredible strength and bravery every day.

As I reflect on the last five years leading CCF, I remain both inspired and humbled by so many brave survivors.

I extend my endless appreciation to our donors, who provide CCF with the means with which to invest in research. To the CCF Board of Directors, I am profoundly thankful for their guidance and leadership as, together, we navigate the challenges of raising critical funds for research, facilities and vital programs to enhance the lives of children with cancer. I also humbly appreciate the CCF Board's faith in me as I now serve proudly as CCF's third President.

CCF achievements are a result of the hard work of many, including the names and faces you will see throughout this report. CCF benefits from countless amazing individuals behind the scenes as well. Your commitment to CCF empowers us to invest in local research, programs and facilities that make such a critical difference in the life of a child facing cancer.

Together, we are a family who seeks promise through working, learning, and fighting, together.

With humble appreciation,



Tasha Museles

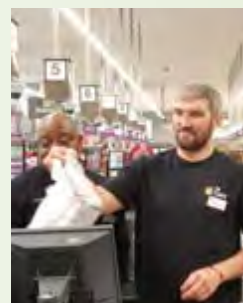
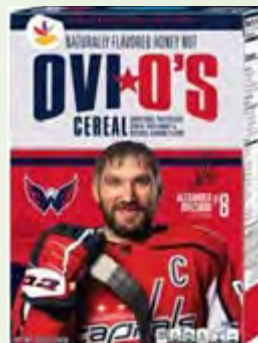
PARTNERS IN THE COMMUNITY

Businesses, groups and individuals often choose to make donations to a charity doing work within their community. However, our “community” is also one of the leading areas for cancer-fighting research in the world. CCF recognizes how valuable it can be to strengthen the connection between businesses, families, practitioners and researchers living and working in the MD, D.C. and Northern VA area. CCF believes that this collaborative approach in the community can have a tremendous impact on achieving the common goal of safe, effective treatment for children fighting cancer. Examples of some of the generous and giving partners are below.

Giant Food and Ovi O's

In September, Giant Food partnered with the Washington Capitals and its captain Alex Ovechkin, known to fans simply as Ovi, to launch a new cereal called Ovi O's. A portion of the cereal's proceeds benefited

CCF. On September 6, 2019, Ovi visited a classroom, stocked his own cereal at a Giant, and shared the cereal with patients at the Georgetown Hospital Pediatric Oncology/Hematology Department.



Mike Hugg Media



Mike Hugg Media



MP Jordan.com

Anne Arundel County Fire Department and first responders

For the third year, Fired Up for Childhood Cancer Awareness held its Family Fun Day to benefit CCF. Launched by dedicated firefighters of Anne Arundel County, MD, the event brought hundreds of first responders together for another incredible day in September that featured dozens of trucks and demonstrations, a silent auction, food trucks, a DJ, booths and games, face painting and bounce house for hundreds of people in the area.

In 2019, the county's fire department charity softball team joined the effort and donated a portion of ticket sales from their annual game against the police department following a Bowie Baysox game. Baysox players even played wearing special game day jerseys, which were then auctioned off to boost the day's fundraising success. Two amazing days, hundreds of first responders volunteering time, effort, gear, and prizes-- all for children fighting cancer.

FINDING INSPIRATION

It is unacceptable that so many local families have a child fighting cancer. However, their bravery and resilience help remind all of us why we must continue to do everything possible to find better treatments and cures.

DARREN: Living with a brain tumor, waiting for a cure

Darren was born on August 19, 2009, the first child of Derrick and Lauren Leonard. At 6 weeks old, the Leonards noticed Darren's eye deviating to the side. Concerned, they scheduled an appointment with ophthalmology at A.I. DuPont Hospital for Children in Wilmington, DE. Darren was diagnosed with a brain tumor at just eight weeks old. Upon hearing the words "your child has cancer," the Leonards

knew immediately that they had to provide a loving, supportive and strong network for Darren to begin his treatment journey.

In 2018, the Leonards ran across an article about promising treatments for complex brain tumors from the lab headed by Eric Raabe, M.D. Ph.D. at Johns Hopkins Hospital. Dr. Raabe, a CCF-funded research awardee, helped guide the Leonards' next steps in treatment regarding new progressions of Darren's tumors.

By the end of 2019, Darren had endured 3+ years of chemotherapy, 15 surgeries, over 50 MRI's, and more procedures and pokes than they could ever count -- things that NO child should ever have to endure. Today, Darren is a 10 year old walking and talking



Darren dances at the CCF Gala

miracle who loves to show off his dance moves.

More on Darren's journey can be found here: <https://childrenscancerfoundation.org/story/darren-leonard> and from the 2019 CCF Video here: <https://childrenscancerfoundation.org/ccf-video/>



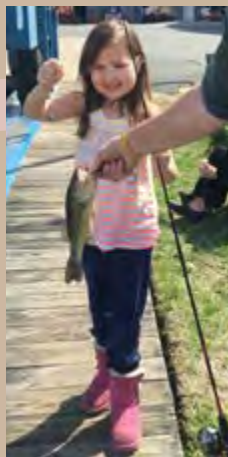
Photo courtesy of Lauren Leonard

IN LOVING MEMORY Ava Sophia Daniels

Even with the most advanced care, loving family, supportive community, and fierce determination, a child can still lose the war against cancer.

Ava will forever be in our hearts and fuels CCF's dedication to ensuring each child facing cancer a healthy future.

January 23, 2007 –
July 23, 2019



Photos courtesy of Melissa Daniels

RESEARCH AND PROGRAMMATIC GRANTS

A benefit of funding local research in world-class hospitals is that the research *and* programs supporting the needs of the 'whole' young patient, and his or her family, is a priority. CCF recognizes the importance of funding programs and research with proven outcomes, following a cancer diagnosis. Ensuring the needs of the patient are met, in terms of treatments, as well as socially, educationally and therapeutically is critically important for all CCF funded programs. CCF was honored to continue its support of many meaningful programs in 2019.



Jeffrey Toretsky, M.D.
4th Annual Force 3
Fellowship Award
Georgetown Lombardi
Comprehensive Cancer Center
Ewing Sarcoma



Lei Peng, M.D.
Giant Food CCF
NextGen Award
Johns Hopkins Medicine
Acute Myeloid Leukemia



Nirali Shah, M.D.
*Pediatric Oncology Branch,
National Cancer Institute*

Clinical Trials for treating recurring Leukemia

While leukemia is one of the more treatable cancers a child can face, the prognosis drops significantly if the leukemia returns. Dr. Shah has dedicated her research to finding an effective way for a patient's immune cells to correctly identify and destroy these cancer cells. Dr. Shah received the CCF 2014 Giant Food Next Gen Grant and since then has brought her research to clinical trials, which warranted her 2019 CCF research funding. Dr. Shah has identified two separate proteins that can fight through a cancer cell's masking ability.



Cara Rabik, M.D., Ph.D.
Johns Hopkins Medicine
**B-cell Acute Lymphoblastic
Leukemia**



Eric Raabe, M.D., Ph.D.
Johns Hopkins Medicine
**Atypical Teratoid/Rhabdoid
Tumors**



Yanxin Pei, Ph.D.
Children's National Health
System
Medullablastoma



Ayküt Uren, M.D.
Georgetown Lombardi
Comprehensive Cancer Center
Rhabdomyosarcoma



Charles Eberhart, M.D., Ph.D.
Johns Hopkins Medicine
High Grade Glioma



Joanna Kitlinska, Ph.D.
Georgetown Lombardi
Comprehensive Cancer Center
Ewing Sarcoma

Photos provided by individual listed

Only about 4% of federal dollars for cancer research are allocated to pediatric cancer.

Researchers depend on private foundations like The Children's Cancer Foundation, Inc. to launch new research or keep research going based on promising findings.

AYA Support Groups at Herman & Walter Samuelson Children's Hospital at Sinai

In 2019, CCF provided its second year of support funding the Adolescent and Young Adult (AYA) Support Groups for hematology/oncology patients treated at Sinai Hospital aged 13 to 26.

The AYA program provided the opportunity for 47 young patients to participate in activities with peers that they may not have been able to do otherwise, due to either limitations of their treatment or financial barriers. These activities range from pizza and skating parties to amusement parks and football games. CCF is the sole funder of this special program, which serves teens who often feel isolated due to limitations of their treatment.



(L to R) CCF Chairman Jerry Chadwick and CCF President Tasha Museles present the award check to Sinai Hospital representative Geannine Darby and one of the Support Group participants at the 35th Annual CCF Gala.

The Magic Castle at the Maryland Proton Treatment Center

For decades, CCF's Magic Castle Sprogram at University of Maryland provided encouragement and rewards to brave young patients facing long, painful and exhausting treatments. The program and castle moved in 2016 when the Maryland Proton Treatment Center opened, currently offering therapy to approximately 50 children each year.

At the start of treatment, each young patient is asked to write three wishes on a slip of paper and place it inside the Magic Castle, located in the patient waiting area. The child is then told that the on the final day of treatment, after ringing the bell, there is a celebration with family and staff as they receive one of their wishes, or several, based around a theme to mark their bravery and perseverance.

Wishes in 2019 included a zoo membership, a shopping spree, a Trolls party for all of her stuffed animals (below,) a bedroom makeover, and cooking classes.



Photo courtesy of MPCTC

Additional Programs and Facilities Funded

The Children's Inn at the National Institutes of Health | 6th Annual "Shirley's Kids" Respite Weekend (right) and Education and Instructional Support Program

Children's National Health System | Fertility Preservation Program

Hopecam | Expanding access to technology in classrooms enabling local students with pediatric cancer to remain in school during treatment

Horizon Day Camp | Funding for five children to attend camp for seven (7) weeks during Summer 2020

Johns Hopkins Medicine | Continuation of pledge for The Children's Cancer Foundation, Inc.'s Pediatric Oncology Outpatient Unit in the Bloomberg Children's Tower

University of Maryland Medical Center | Continuation of pledge for the UMMC children's cancer unit



Photo courtesy of The Children's Inn

Children's Inn families pose with CCF Board Members Terry McGowan and Steve Coomes, and CCF President Tasha Museles after picking up Giant snacks and heading out for the first activity for the Respite Weekend.

2019 CONTRIBUTORS

CCF is honored to receive funds* from our generous donors.

\$75,000 +



\$25,000 - 74,999

The Kahlert Foundation
NECA - Maryland Chapter

Regency Furniture

\$10,000 - 24,999

Estate of Peter Manos
Fired Up for Childhood Cancer Awareness
Johns Hopkins Medicine

Charles and Melba McMillan
Riviana Foods Inc.
Saval Foodservice

\$5,000 - 9,999

Blackhawk Network, Inc.
Cancerhawk Foundation
Capital Electric
Children's National Health System
Electrical Automation Services, Inc.
General Mills
Jean Kettell Studio of Dance
Museles Family
Napoleon Andrews

Nestle
Newman's Own Foundation
Pepsi Bottling Group, LLC
Schmidt Baking
Serta Simmons Bedding
Stelfox Foundation
The Columbia Bank
Utz Quality Foods, Inc.
Weis Markets, Inc.

\$2,500 - 4,999

APG
ASR-Group Domino Foods
Azrael Franz Schwab & Lipowitz, LLC
Jonathan & Myra Azrael
Blue Cargo Group, LLC
Castle Sprinkler & Alarm, Inc.
The Children's Inn at NIH
Cohen, Seglias, Pallas, Greenhall & Furman, P.C.
CohnReznick
DE Well Container Shipping, Inc.
Freestate Baltimore, LLC
Friends of the Industry, LLC c/o Kies Consulting, LLC
Georgetown Lombardi Comprehensive Cancer Center
Graybar
Hillsdale Furniture
Jackson Furniture
John E. Kelly & Sons
Keystone Electric Company, Inc.

KL Hoffman & Co.
Lancaster Foods, Guest Services
Lightlity
M&T Bank
M&T Foundation
Maryland Proton Treatment Center
McCormick & Co., Inc.
The McKeown Trust
Milwaukee Tool
Moonlight Companies
Phoenix Rising Group, Inc.
Potomac Sprout Company
Reverb - Heart's Love Alive Tour
ROSS Companies
LifeBridge Health at Sinai Hospital
University of Maryland Medical Center
Valassis - Silwad Foundation
Christian Wieland

*Amounts reflect both direct contributions and the facilitation of additional donations.

continued on next page

2019 CONTRIBUTORS

\$1,000- 2,499

Abato, Rubenstein and Abato, PA
 AJW Financial Partners, LLC
 Alason Electrical Contractors, Inc.
 Apartment Restorers, LLC
 Apartment Turnovers, Inc.
 Baltimore DC Building Trades
 Benefits Administration Corp
 BGE Home
 Bowie Baysox Baseball Club
 Brown & Heim, Inc.
 Burris Logistics
 Char-Town Entertainment
 DECA, Inc.
 Enterprise Electric Company
 Federated Lighting
 Florida's Natural
 Frontline Media Solutions, Inc.
 Frontstream
 G & F Graphic Services, Inc.
 Gordon Family Fund/Community
 Foundation of Howard County

Groupmatics, LLC
 Hopecam
 IBEW Local 24
 JM Gillin Corp
 Klaussner Furniter
 KLNb
 Kuka Furniture, Inc.
 L S Direct Marketing
 Made You Look Advertising, LLC
 MamaMia Produce, LLC
 David Maxey
 Park Place Corporation
 Parker House Furniture
 Penn Del Jersey NECA
 Potomac Testing Inc.
 Power Solutions, LLC
 Raine & Son
 Samuel and Penny Rothrock
 Saw Enterprises, Inc.
 Schneider Electric
 Segal Marco Advisors

Shepherd Electric Co.
 Shepherd Electric Supply
 Stephen Goad, Inc.
 Mark Stuart
 Studebaker Submetering Inc.
 The Boddiford-Koras Group
 Tidewater Finance Company/
 Motor Credit
 US Quality Furniture Services, Inc.
 United Rentals
 Valley Lighting LLC
 Washington DC NECA
 We Cancerve Movement Inc.
 Western Maryland Electrical
 Industry
 Willis US Holding Company, LLC

In-Kind Donors

CCF is grateful to those that contributed products or pro bono services in 2019:

Baltimore Sun Media Group
 Baltimore Ravens
 Jackie Black
 Canada Dry Potomac
 DC United
 Food World
 Force 3
 Giant Food- Landover
 Hershey Foods
 Hughes Sales
 Dave Johnson, WTOP
 Kendra Scott
 Safeway- Eastern Division

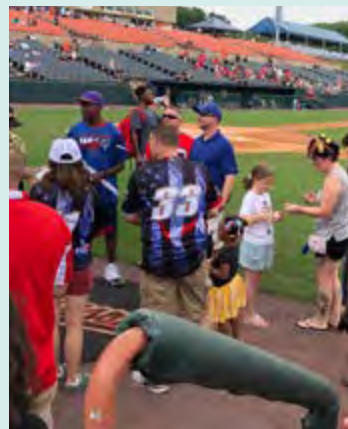
Bev Maddox
 Monumental Sports
 PPS Creative- Pam Stegemerten
 Penguin Books/Random House
 Torrey Smith Family Fund
 Tray Graphics
 UTZ Snacks
 Mark Viviano
 Washington Capitals
 Washington Nationals
 XML Financial
 Whithner Graphics

Volunteers

CCF thanks the volunteers who dedicated their time and effort, making our community stronger and our many activities possible:

Alisha Bartels
 Angel Benson
 Jamie Berman
 Erin Cassell
 Lance Cook/Tino's Italian Bistro
 Charlie "Santa" Cole
 Steve Coomes
 Carolyn Coomes
 Timothy Coomes
 Kristin Coomes
 Kara Etzold
 Orianna Gerhardt
 Cody Marzec

Susan Matoska
 Terry McGowan
 Mandy Newman/Gordon Biersch
 Alaina Pomeroy
 Jenna Ross
 Mike Shearin
 Darius Thomas
 Dan Verrilli
 Sebastian Verrilli
 Torri Verrilli
 Shilo Verrilli
 Hayden Verrilli
 Patricia Verrilli



Mike Hugg Media

CCF LEADERSHIP

BOARD OF DIRECTORS

Executive Committee

Chairman Jerrold C. Chadwick, Jr., D.M.
My Fresh Solutions, LLC

Steve Coomes
Retired, Safeway

Vice Chair Lindley K. Bucci
Radio One, Inc.

Karen Fernandez
Food World/Food Trade News

Secretary Terence McGowan
Giant Food

Kara Etzold
Force 3

Treasurer Daniel J. Kenney
CohnReznick Group

Michael Golder
Sysco

Legal Counsel Paul J. Schwab, Esq.
Azrael, Franz, Schwab & Lipowitz, LLC

Darlene Holmes
Saval Foodservice

Charmel Y. McMillan
Char-town Entertainment

Matthew Boyd
Safeway - Eastern Division

David J. Miskovich
ROSS Management Services

John W. Carver III
The Carver Group

Michael O'Halloran
M&T Bank

Christopher Chadwick
Marcus & Millichap

Kathleen Gast Smith
PinnacleCare International

Matthew Cimino
BGE HOME

William Yull
NECA, Maryland Chapter



CCF Vice Chair Lindley Bucci and Legal Counsel Paul Schwab catch up at the Saval Foodservice Golf tournament.



Board member Steve Coomes (R) thanks MD Gov. Larry Hogan for designating CCF as an ongoing recipient of the Governor's Cup taekwondo competition proceeds.

SCIENTIFIC ADVISORY BOARD

Jeffrey Toretsky, M.D., *Chair*
Georgetown Lombardi
Comprehensive
Cancer Center

Aziza Shad, M.D.
Children's Hospital at Sinai

Patrick Brown, M.D.
The Johns Hopkins Hospital

Aykut Uren, M.D.
Georgetown Lombardi
Comprehensive
Cancer Center

Jeffrey Dome, M.D., Ph.D.
Children's National Health System

Brigitte Widemann, M.D.
Center for Cancer Research,
National Cancer Institute

Young Kwok, M.D.
University of Maryland Medical Center



Mike Greaney, President of Force 3, presents proceeds of their fundraiser to support the research of Force 3 Fellow Jeffrey Toretsky, M.D. of Georgetown.

STAFF

Tasha Museles
President

Rose Ann Verrilli
Administrative Assistant

Lauren S. Lasher
Assistant Director,
Events and Communications

Shirley Howard (d. 2013)
President/Founder Emeritus

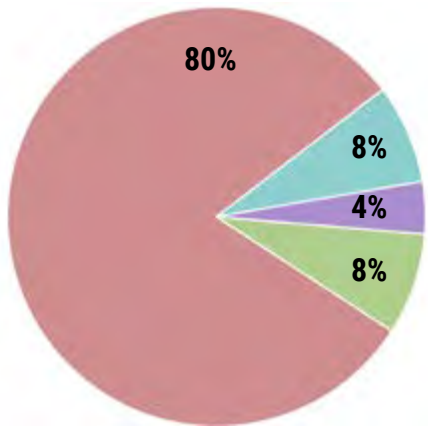
*All lists reflected as of December 31, 2019



CCF staff meet Santa at the annual children's holiday party

FINANCIAL SNAPSHOT

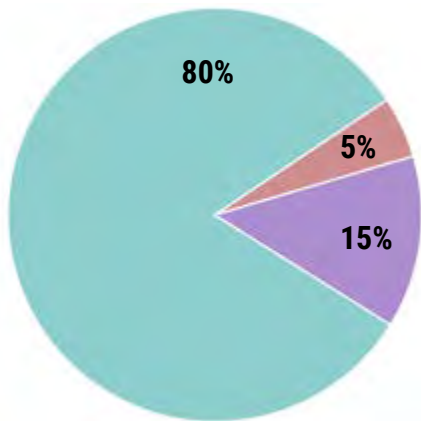
REVENUE BY SOURCE



Revenue

Corporate	\$1,206,834
Foundation	\$115,000
Individual Giving	\$60,470
Investments	\$117,604
TOTAL:	\$1,499,908

EXPENSES BY CATEGORY



Expenses

Programs (Research and non-research Grants)	\$1,106,100
General/Administrative	\$71,283
Fundraising	\$198,965
TOTAL:	\$ 1,376,348

Statement of Financial Position

Total Revenue	\$1,499,908
Total Expenses	\$1,376,348
Expenses in Excess of Revenue	\$123,560
Beginning Net Assets	\$876,541
Ending Net Assets	\$1,000,101
Total Liabilities	\$78,231
Total Assets	\$1,078,332

Numbers shown are unaudited.
 The full 2019 financials will be available in June 2020.
 The 2019 audited statements and IRS 990 can be obtained by visiting the website at www.childrenscancerfoundation.org or calling the CCF office at 443-546-4479.



Courtesy of Vanessa Bishop



In 2019, CCF met Vanessa Bishop through Young Kwok, M.D. (upper right) of the Maryland Proton Treatment Center. An inspiring young woman, Vanessa has been fighting brain cancer for the last several years. She shared her journey with the 4th Annual CCF Research Symposium, which can be viewed on the CCF website at www.childrenscancerfoundation.org/story/vanessa-bishop

The Children's Cancer Foundation, Inc.

5570 Sterrett Place, Suite 204

Columbia, Maryland 21044

443-546-4479

info@childrenscancerfoundation.org

www.childrenscancerfoundation.org

Facebook: [@thechildrenscancerfoundation](https://www.facebook.com/thechildrenscancerfoundation)

Twitter: [@CCFToday](https://twitter.com/CCFToday)



give.org

All photographs by PROFESS Multimedia or CCF unless otherwise specified